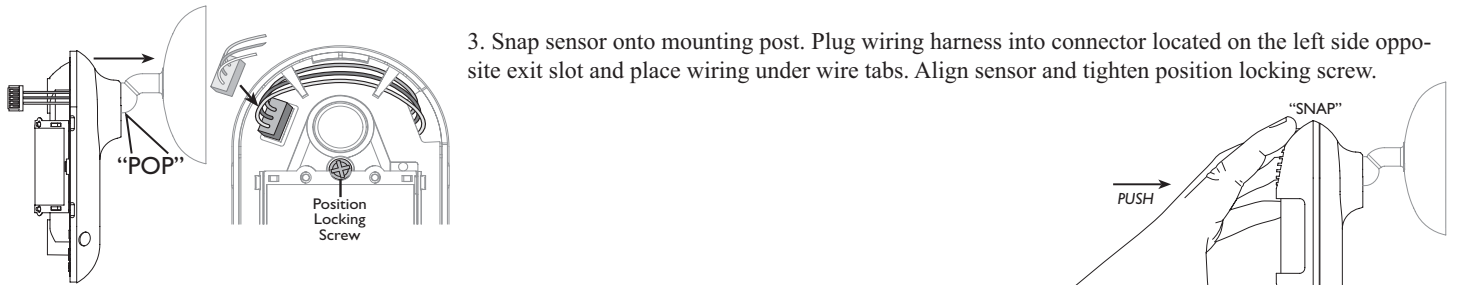
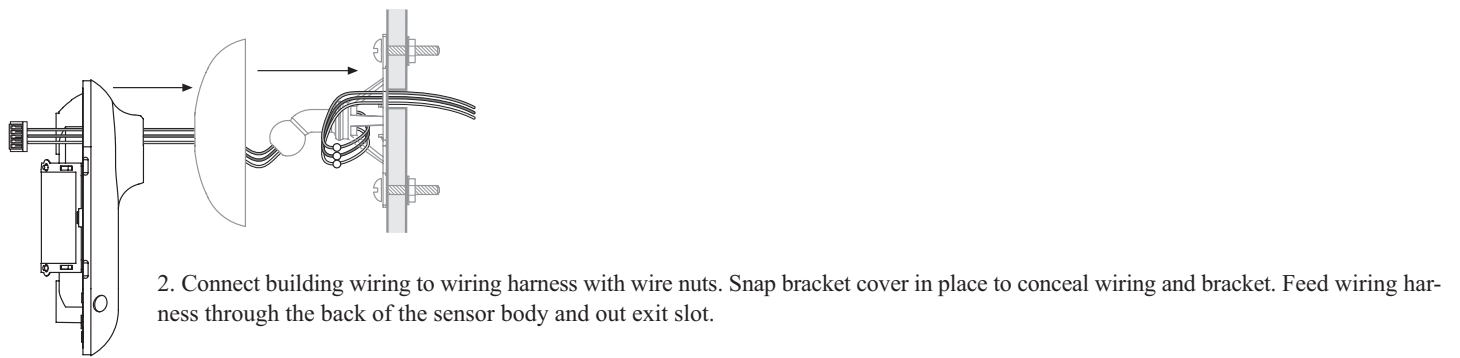
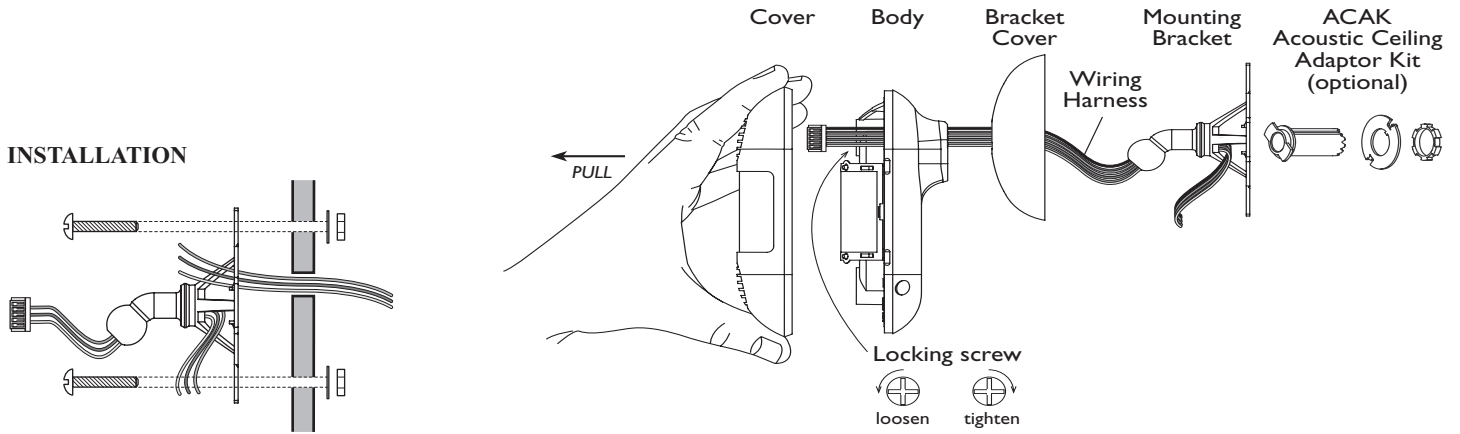
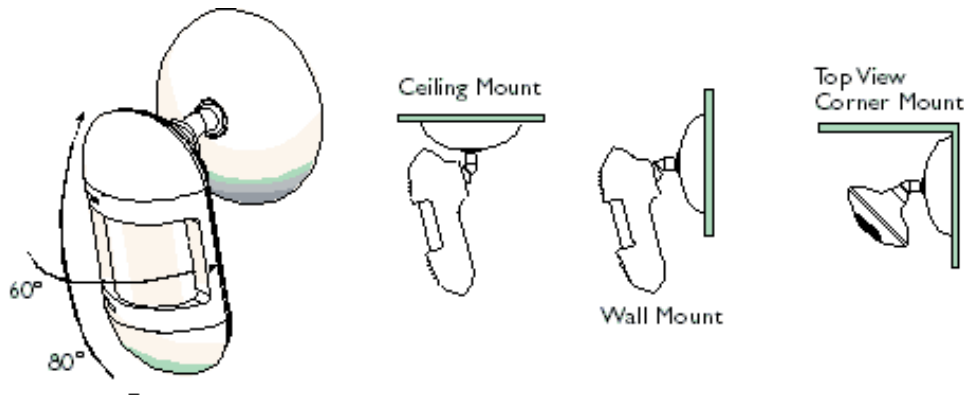


LightOWL Dual Technology Passive Infrared and Acoustic Sensors LODT and LOIR

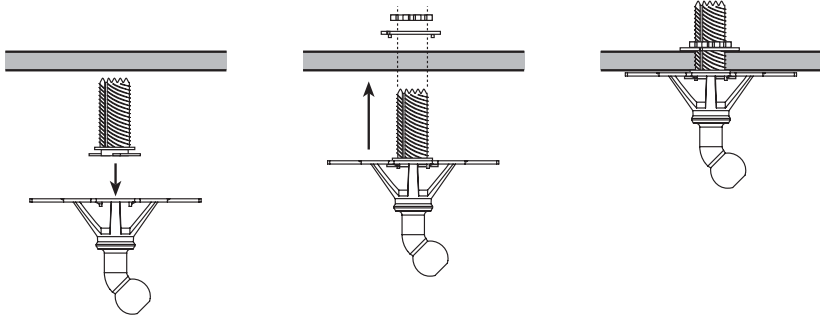
Installation and Setup Procedure



INSTALLATION OPTIONS

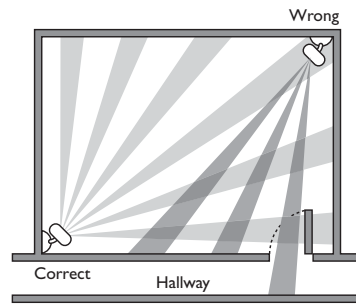


ACAK INSTALLATION (optional)



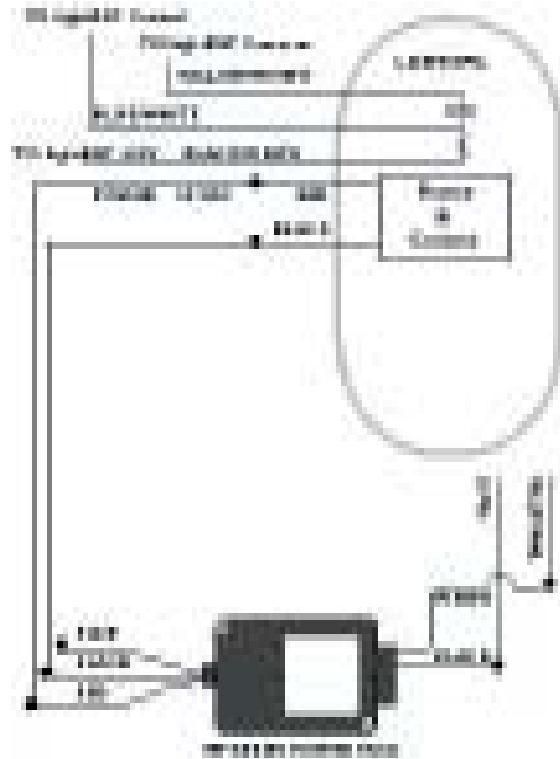
Insert ACAK into mounting bracket and twist clockwise 90° to lock in place. Screw bracket and self-cutting AKAC into ceiling tile and secure with washer and nut.

SENSOR PLACEMENT

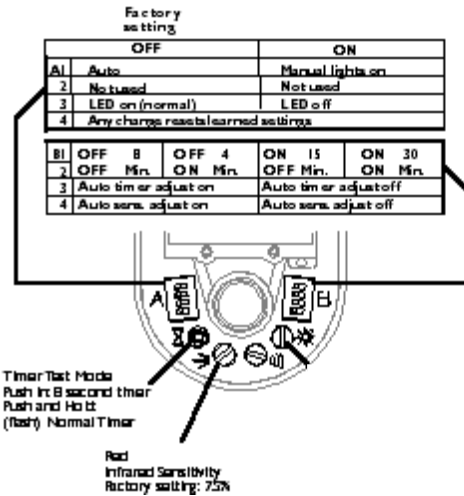


When placing the sensor in a room do not place where the sensor is aimed out through a door. The sensor can detect hallway traffic, forcing lights-on.

PHYSICAL WIRING



CONTROLS



TROUBLE SHOOTING

Problem	Possible Cause	Test	Result
HID Lights Flash Bright-Dim-Bright	Control 'Floating'	Unplug all RJ-12 from Flashing Lamp	Replace Affected Cable
Lights Stay Dim	Low Voltage Shorted to +10V	Unplug all RJ-12 from Flashing Lamp	Replace Affected Cable
Lights Won't Dim	15.4 minute Warm Up	Wait 16 minutes	Normal Operation
Light Won't Dim	Common Shorted to Control	Remove all but One sensor from Control	Test One sensor at a time



Building Automation, Inc.

Hubbell Building Automation, Inc.

9601 Dessau Road • Building One • Suite 100 • Austin, Texas 78754

512-450-1100 • 512-450-1215 Fax

www.hubbell-automation.com